

Local Authority Specific Annex 2019-2020

Local Authority: Blaenau Gwent

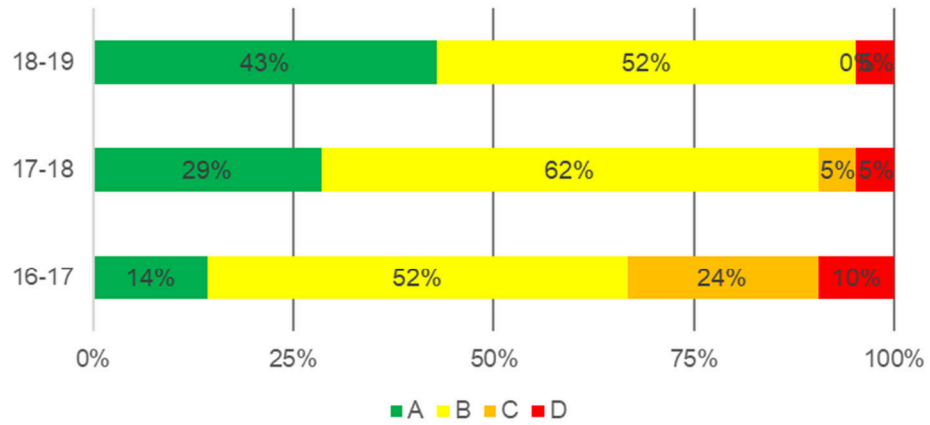
Summary of National Categorisation of schools in the Local Authority in 2016-2017, 2017-2018 and 2018-2019

| Step 2 - Primary | | Number of Schools | | | | Percentage of Schools | | | |
|------------------|-------|-------------------|----|-----|-----|-----------------------|-----|-----|-----|
| | | D | C | B | A | D | C | B | A |
| Blaenau Gwent | 16-17 | 2 | 5 | 11 | 3 | 10% | 24% | 52% | 14% |
| | 17-18 | 1 | 1 | 13 | 6 | 5% | 5% | 62% | 29% |
| | 18-19 | 1 | 0 | 11 | 9 | 5% | 0% | 52% | 43% |
| South East Wales | 16-17 | 5 | 19 | 108 | 64 | 3% | 10% | 55% | 33% |
| | 17-18 | 3 | 18 | 84 | 88 | 2% | 9% | 44% | 46% |
| | 18-19 | 6 | 16 | 65 | 105 | 3% | 8% | 34% | 55% |

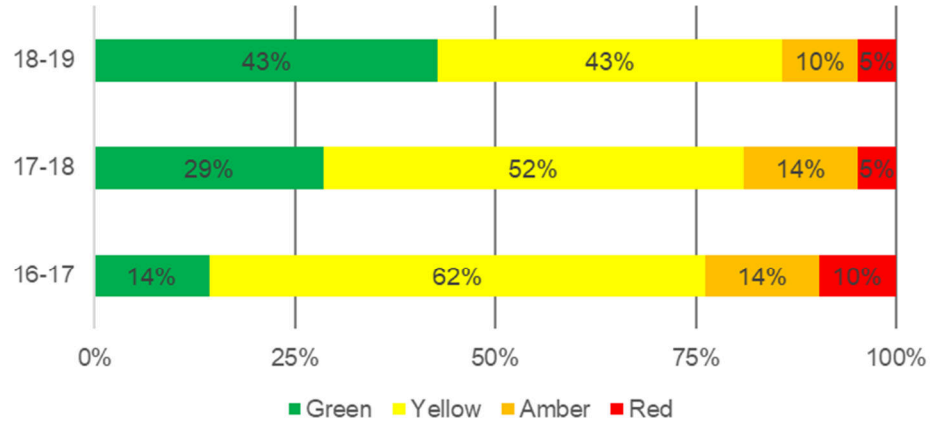
| Step 3 - Primary | | Number of Schools | | | | Percentage of Schools | | | |
|------------------|-------|-------------------|-------|--------|-------|-----------------------|-------|--------|-------|
| | | Red | Amber | Yellow | Green | Red | Amber | Yellow | Green |
| Blaenau Gwent | 16-17 | 2 | 3 | 13 | 3 | 10% | 14% | 62% | 14% |
| | 17-18 | 1 | 3 | 11 | 6 | 5% | 14% | 52% | 29% |
| | 18-19 | 1 | 2 | 9 | 9 | 5% | 10% | 43% | 43% |
| South East Wales | 16-17 | 8 | 16 | 112 | 60 | 4% | 8% | 57% | 31% |
| | 17-18 | 9 | 16 | 81 | 87 | 5% | 8% | 42% | 45% |
| | 18-19 | 6 | 19 | 63 | 104 | 3% | 10% | 33% | 54% |

Note: Two 3-16 schools are included in both primary and secondary tables.

Primary Step 2 - Blaenau Gwent



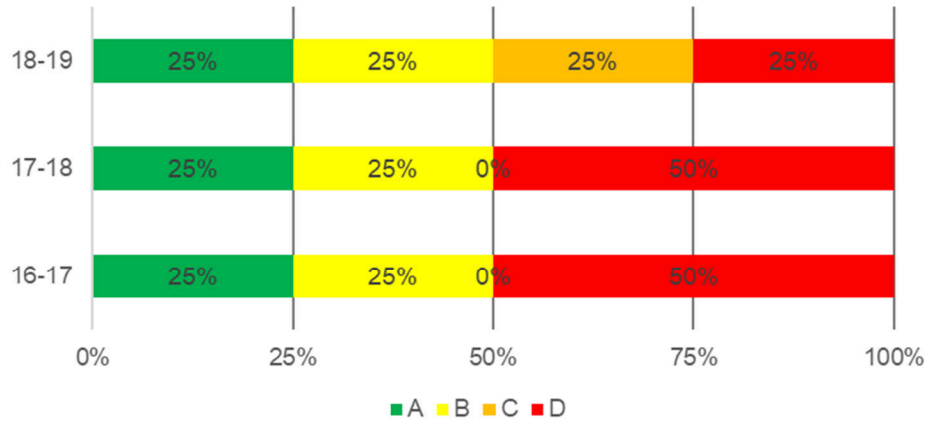
Primary Step 3 - Blaenau Gwent



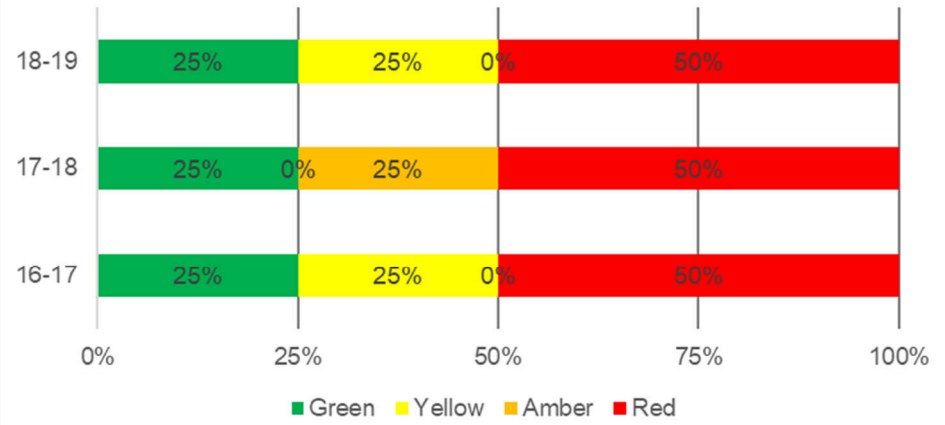
| Step 2 – Secondary | | Number of Schools | | | | Percentage of Schools | | | |
|--------------------|-------|-------------------|----|----|---|-----------------------|-----|-----|-----|
| | | D | C | B | A | D | C | B | A |
| Blaenau Gwent | 16-17 | 2 | 0 | 1 | 1 | 50% | 0% | 25% | 25% |
| | 17-18 | 2 | 0 | 1 | 1 | 50% | 0% | 25% | 25% |
| | 18-19 | 1 | 1 | 1 | 1 | 25% | 25% | 25% | 25% |
| South East Wales | 16-17 | 6 | 9 | 17 | 4 | 17% | 25% | 47% | 11% |
| | 17-18 | 8 | 10 | 13 | 5 | 22% | 28% | 36% | 14% |
| | 18-19 | 6 | 15 | 8 | 6 | 17% | 43% | 23% | 17% |

| Step 3 – Secondary | | Number of Schools | | | | Percentage of Schools | | | |
|--------------------|-------|-------------------|-------|--------|-------|-----------------------|-------|--------|-------|
| | | Red | Amber | Yellow | Green | Red | Amber | Yellow | Green |
| Blaenau Gwent | 16-17 | 2 | 0 | 1 | 1 | 50% | 0% | 25% | 25% |
| | 17-18 | 2 | 1 | 0 | 1 | 50% | 25% | 0% | 25% |
| | 18-19 | 2 | 0 | 1 | 1 | 50% | 0% | 25% | 25% |
| South East Wales | 16-17 | 6 | 12 | 15 | 3 | 17% | 33% | 42% | 8% |
| | 17-18 | 10 | 11 | 12 | 3 | 28% | 31% | 33% | 8% |
| | 18-19 | 7 | 15 | 7 | 6 | 20% | 43% | 20% | 17% |

Secondary Step 2 - Blaenau Gwent



Secondary Step 3 - Blaenau Gwent



LA schools currently in any Estyn follow-up category

| Phase | School | Date of last inspection | Date report published | Follow-up status of last inspection |
|--------------|--------------------|--------------------------------|------------------------------|--|
| Primary | St Illtyds Primary | Oct-17 | Nov-17 | Estyn Monitoring |

| Phase | School | Date of last inspection | Date report published | Follow-up status of last inspection |
|--------------|--------------------------------|--------------------------------|------------------------------|--|
| 3-16 | Abertillery Learning Community | Feb-18 | Apr-18 | Significant Improvement |

High Level Pupil Progress Analysis by Local Authority - 2018 - FP to KS2 / KS2 to KS3

LA/Region: **Blaenau Gwent**

Progress of pupils between FP and KS2

Matching

| Subject | Matched Cohort | 2+ levels of progress | 1 level of progress | 2014 FP cohort | 2018 KS2 cohort | % of FP cohort matched | % KS2 cohort matched |
|---------------|----------------|-----------------------|---------------------|----------------|-----------------|------------------------|----------------------|
| LLC - Welsh | 29 | 96.6 | 3.4 | 37 | 30 | 78.4 | 96.7 |
| LLC - English | 638 | 93.7 | 5.5 | 688 | 673 | 92.7 | 94.8 |
| Mathematics | 671 | 93.6 | 5.5 | 725 | 703 | 92.6 | 95.4 |

* 2018 KS2 English cohort excludes Welsh Medium pupils to more accurately match the FP English cohort.

Progress of pupils between KS2 and KS3

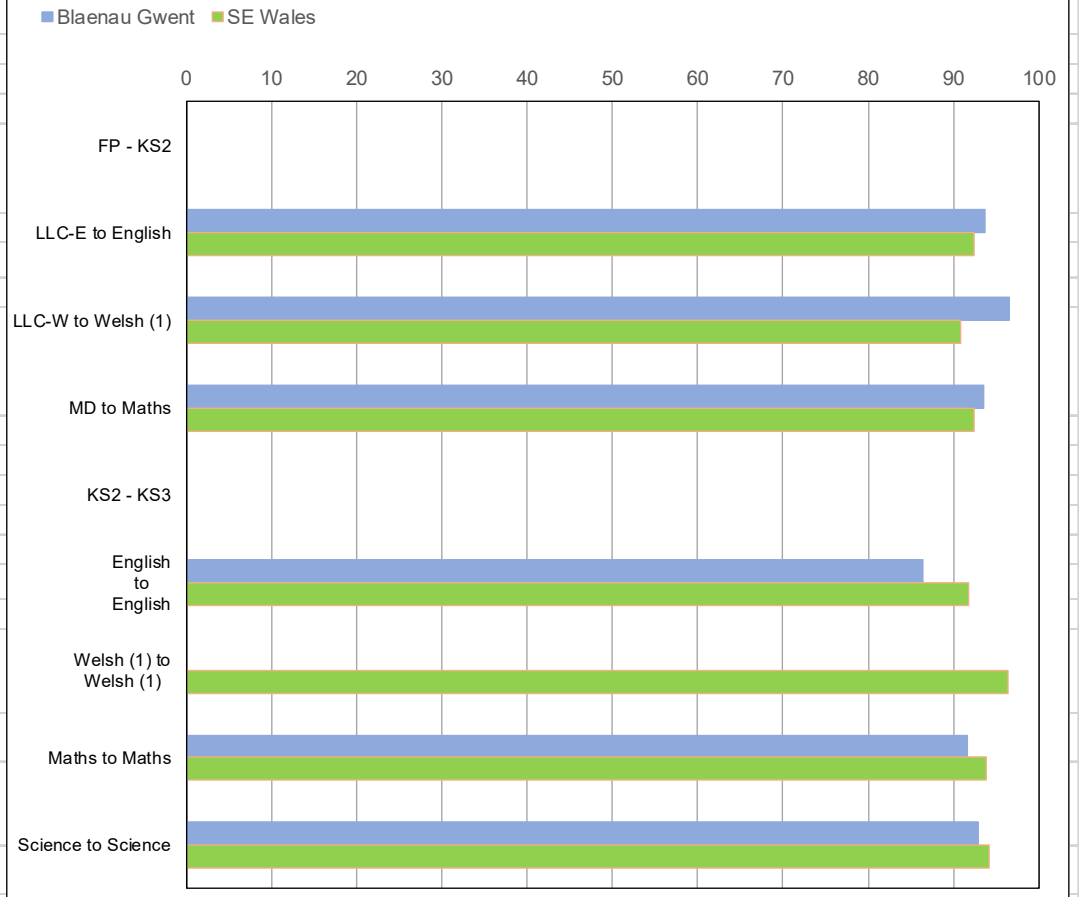
Matching

| Subject | Matched Cohort | 2+ levels of progress | 1 level of progress | 1+ levels of progress | 2015 KS2 cohort | 2018 KS3 cohort | % KS2 cohort matched | % KS3 cohort matched |
|-----------------|----------------|-----------------------|---------------------|-----------------------|-----------------|-----------------|----------------------|----------------------|
| Welsh 1st Lang. | 0 | - | - | - | 26 | 0 | 0.0 | - |
| English | 607 | 32.9 | 53.5 | 86.5 | 752 | 622 | 80.7 | 97.6 |
| Mathematics | 607 | 50.1 | 41.5 | 91.6 | 752 | 622 | 80.7 | 97.6 |
| Science | 607 | 47.1 | 45.8 | 92.9 | 752 | 622 | 80.7 | 97.6 |

Summary

| | | | | |
|--|--------------------|------------------------|----------------|--------------------|
| FP to KS2 Expected Progress (2 'Levels') | LLC-E to English | LLC-W to Welsh (1) | MD to Maths | |
| | 93.7 | 96.6 | 93.6 | |
| KS2 to KS3 Expected Progress (2 Levels) | English to English | Welsh (1) to Welsh (1) | Maths to Maths | Science to Science |
| | 86.5 | - | 91.6 | 92.9 |

% Learners making expected progress across KS2 / KS3 - 2018



LA summary and key issues

- Improve LLC – English, through the acceleration of the acquisition of early language skills, in the Foundation Phase.
- Improve the performance of pupils eligible for free school meals in English and mathematics, at all key stages.
- Reduce persistent absenteeism, particularly in secondary schools and so improve secondary attendance.
- Reduce the number of pupils who are electively home educated (EHE) and consequently, reduce the number of pupils who become NEETS.
- Work with the LA to establish a baseline of post 16 attainment, value added from KS 4 and positive destinations going forward.

Attendance/Exclusions

- There has been an increase in attendance at secondary level since 2015, but a slight decrease at primary. Secondary and primary figures below that of Wales
- There has been an increase in unauthorised absence at both primary and secondary schools, and both are above Wales.

Exclusion figures are reported by LA

- There has been an increase in exclusions of 5 days or fewer at secondary level, but a decrease at primary level. There has been a increase in exclusions of 6 days or more at secondary level, but a decrease to none at primary level.
- There was 1 permanent exclusion in primary schools in 2018, compared to none in 2017. There were 8 permanent exclusions in 2018 in secondary schools (same as in 2017). The breakdown across schools was Abertillery – 5, Brynmawr – 2, Tredegar – 1.

Inspection/Categorisation

- Under the old framework, the percentage of schools judged at least Good for current performance since the 2014/15 school year was 57%. 71% of schools were judged Good or better for prospects for improvement. Under the new framework, the percentage of schools judged at least Good for Standards of achievement was 67%. 67% of schools were judged Good or better for Well-being and attitudes to learning.
- The percentage of primary schools categorised green has continued to increase in 2018/19, and the percentage of schools in the amber / red categories has continued to decrease. Two secondary schools remain categorised as red, but one has moved from amber to yellow. (provisional and confidential).

Schools requiring Improvement 2018-2019 (Amber and Red Overall Categories of support)

The information below indicates the schools in the overall category of Amber or Red in the Local Authority in the academic year 2018-2019, that will require additional support. The support is in line with the guidance within the National Categorisation System and within the SEWC Intervention Framework 2018-2019. Each of these schools have a detailed Intervention or Support Plan, the progress each school makes over the next academic year will be captured through regular Education Improvement Boards (EIBs) or Intervention Meetings.

| Schools requiring Amber levels of support | Schools requiring Red levels of support |
|---|---|
| Brynbach Primary | Abertillery Learning Community |
| Rhos-y-Fedwen Primary | Brynmawr School |

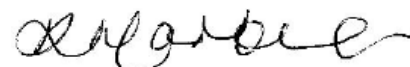
LA Director / Chief Education Officer:

Mrs. Lynette Jones

Cabinet Member for Education:

Cllr. Clive Meredith

EAS Managing Director



Ms. Debbie Harteveld